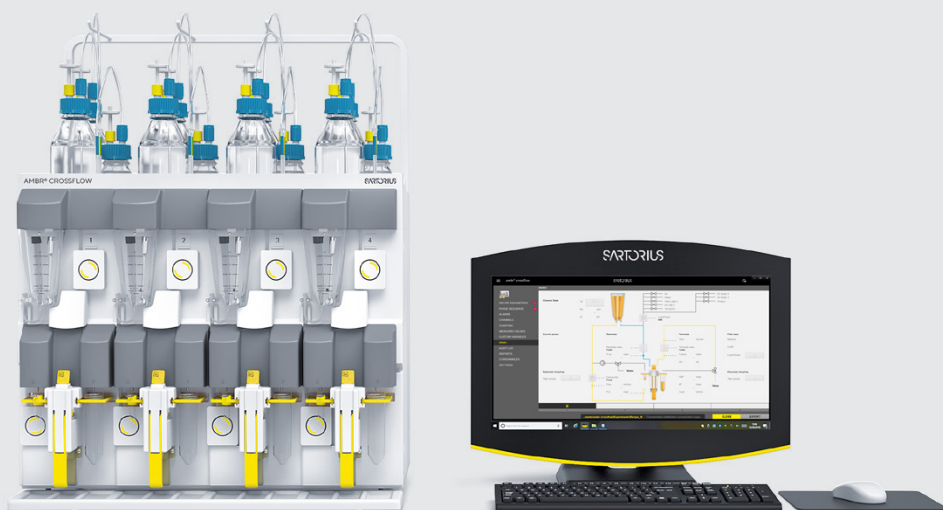


## Ambr<sup>®</sup> Crossflow



### Technical Specification

#### Scope

System consists of 4, 8, 12 or 16 independent crossflow channels (four per module). Up to four modules can be managed by one control station. This means Ambr<sup>®</sup> Crossflow is capable of performing screenings with up to 16 Ambr<sup>®</sup> CF filters simultaneously.

### Recommended Working Space

#### System Dimensions Including Control Station

Ordering Code	System	Width	Depth	Height
061-8A60	Ambr <sup>®</sup> Crossflow – 4 channel system	138.5 cm   45.6"	42.0 cm   16.5"	79.5 cm   31.3"
061-8A61	Ambr <sup>®</sup> Crossflow – 8 channel system	200.5 cm   70.6"	42.0 cm   16.5"	79.5 cm   31.3"
061-8A62	Ambr <sup>®</sup> Crossflow – 12 channel system	262.5 cm   94.4"	42.0 cm   16.5"	79.5 cm   31.3"
061-8A63	Ambr <sup>®</sup> Crossflow – 16 channel system	324.5 cm   118.8"	42.0 cm   16.5"	79.5 cm   31.3"

#### Expansion Module Dimensions (Without Control Station)\*

Ordering Code	System	Width	Depth	Height
061-8A70	Ambr <sup>®</sup> Crossflow – 4 channel system	62.0 cm   24.4"	42.0 cm   16.5"	79.5 cm   31.3"
061-8A71	Ambr <sup>®</sup> Crossflow – 8 channel system	124.0 cm   48.8"	42.0 cm   16.5"	79.5 cm   31.3"
061-8A72	Ambr <sup>®</sup> Crossflow – 12 channel system	186.0 cm   73.2"	42.0 cm   16.5"	79.5 cm   31.3"

\* extension on an existing Ambr<sup>®</sup> Crossflow System to a maximum of 16 channel

# Technical Data

## Component Specification

Filter area	10 cm <sup>2</sup>   50 cm <sup>2</sup> (with adapter)	
Peristaltic pump (feed and load)	0 – 80 mL/min	
Min. recirculation volume	5 mL	
Retentate vessel	120 mL	
Load cell	0 – 150 g	
Mixer	0 – 500 rpm	
Pressure sensors	0 – 5 bar	
Max. inlet pressure	3 bar (43.5 psi)	
pH probe	Operating range 4.0 – 9.0	
Conductivity probe	1 to 60 mS/cm	
Dimensions (W×D×H) 4 channel module	62.0×42.5×54.0 cm	
Weight   4 channel module	42 kg (93 lbs.)	
IP- Standard	IP 2X	
Electrical requirements	Control System	230 VAC   50 Hz 0.9 Amp 120 VAC   60 Hz 1.3 Amp
	Module	230 VAC   50 Hz 0.75 Amp 120 VAC   60 Hz 1.5 Amp

## Accuracy of Measuring Systems & Pumps

	Units	Value
<b>Load cells</b>		
Quantity per module		4
Weighing range	g	0 – 150
Accuracy	g	0.1
<b>Pressure sensors</b>		
Measuring range	bar	0 – 5
Accuracy	%	±5
<b>pH sensor</b>		
Measuring range	pH	4.0 – 9.0
Accuracy	pH	±0.1
<b>Conductivity sensor</b>		
Measuring range	mS/cm	<1 – 60
Accuracy	%	±10 or 1mS
<b>Sampling pumps</b>		
Quantity per module		4
Accuracy (min quantity)	µL	4
<b>Pumps</b>		
Quantity per module		8
Max. capacity	mL/min	80
Min. capacity	mL/min	0.01

# Accessory

## Ambr® CF Adapter Kit for Sartococon® Slice 50

Ambr® Crossflow can now be run with the 50 cm<sup>2</sup> membrane area Sartococon® Slice 50 cassettes.

The Ambr® CF Adapter Kit SC50 enables the use of Sartococon® Slice 50 with Ambr® Crossflow systems from software release R8.29.

The reusable adapter kit is designed to accommodate four Sartococon® Slice 50 cassettes by redirecting feed, retentate, and permeate lines to the Sartococon® Slice 50 cassettes instead. They are accommodated in a specially designed filter holder. The adapter kit can be flushed with a CIP block for reuse.



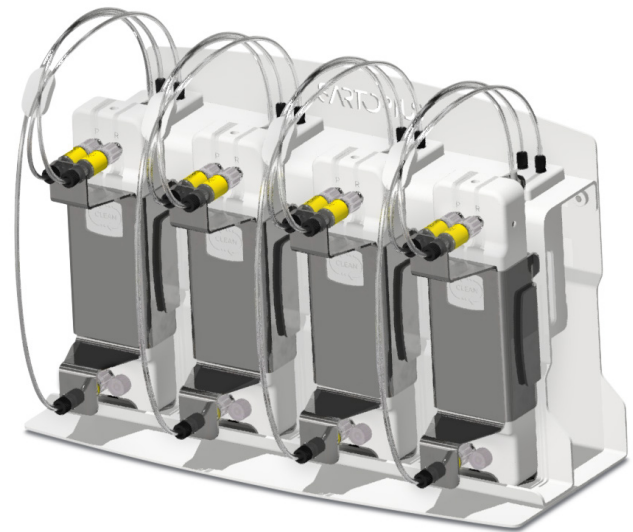
Single Ambr® CF adapter for Sartococon® Slice 50

This means Ambr® Crossflow is now capable of performing membrane screenings with up to 16 Sartococon® Slice 50 modules simultaneously.

Intuitive design of the Ambr® CF Adapter Kit SC50 ensures quick and error free assembly to the Ambr® Crossflow system. Once installed CIP of the adapter kit can be performed, leaving only the cassettes to be disposed.

### Sartococon® Slice 50 Adapter Set

Item	Quantity
Adapter	4
Filter holder	4
CIP block	4
Stand	1
Installation Instructions	1



## Ordering Details

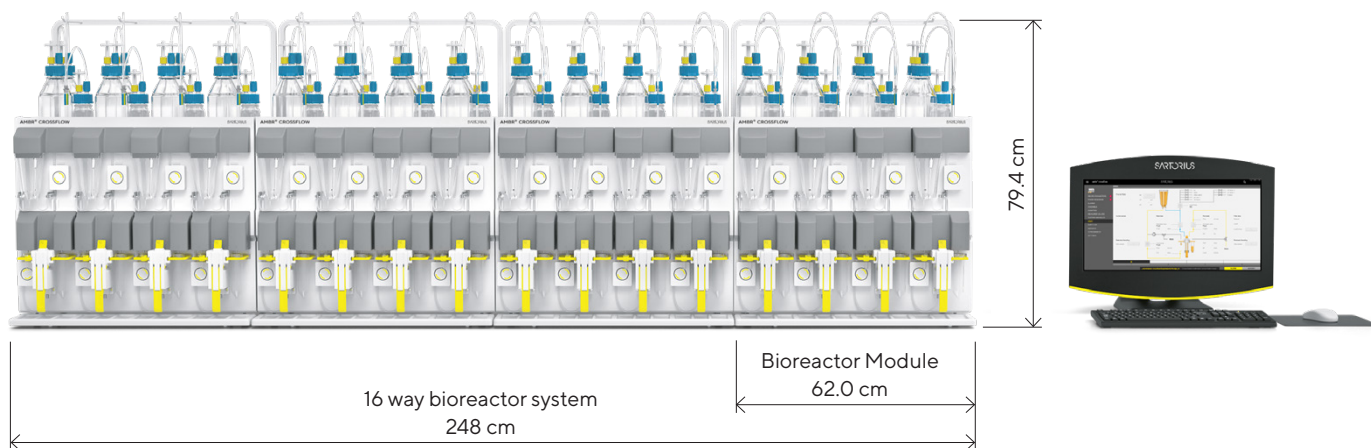
Ordering Code	Item	Description
061-2A50	Ambr® CF Adapter Kit SC50 (pack of 4)	Adapter kit for the use of Sartococon® Slice 50 with Ambr® Crossflow

Sartococon® Slice 50 cassettes are not included and need to be ordered separately.

### Note

Please ensure that you use Ambr® Crossflow software release R8.29 or later with this accessory. For software upgrades, please contact your local support team.

# Dimensions of Ambr<sup>®</sup> Crossflow – 16 Channel System



## Germany

Sartorius Stedim Biotech GmbH  
August-Spindler-Strasse 11  
37079 Goettingen  
Phone +49 551 308 0

## USA

Sartorius Stedim North America Inc.  
565 Johnson Avenue  
Bohemia, NY 11716  
Toll-Free +1 800 368 7178

🌐 For further contacts, visit  
[www.sartorius.com](http://www.sartorius.com)