

Installation Instructions

English Translation of the Original Installation Instructions

BioPAT[®] Trace OPC[®] DA Server

Software



85037-552-54



SARTORIUS

Contents

1	About These Instructions	4
1.1	Scope	4
1.2	Accompanying Documents	4
1.3	Symbols Used	5
1.3.1	Warnings	5
1.3.2	Other Symbols Used	5
2	Basic Principles of Software Use	6
2.1	Legal Information	6
2.1.1	Installation Instructions	6
2.1.2	“BioPAT® Trace OPC® DA Server” Software	6
2.1.3	Trademark Rights	7
2.2	Safety Instructions	8
2.3	Intended Use	8
2.4	Equipment Supplied	9
2.5	Requirements	9
2.5.1	Operating Personnel	9
2.5.2	Hardware	9
2.5.3	Operating System	9
2.5.4	Additional Software	9
2.6	Software Description	10
2.7	Software Setup	10
3	Configurations and Installation	11
3.1	Preconfiguring the Operating System Settings	11
3.2	Installation	12
3.3	Starting the Configuration	20
3.4	Verifying the Correct Display of Values	26
3.5	Initial Operation of the OPC® DA Server	32
4	Specifications	33
5	Appendix	34
5.1	Additional Documentation	34

1 About These Instructions

1.1 Scope

These instructions supply all the information you need to install your “BioPAT® Trace OPC® DA Server” software (hereinafter also referred to as “the software”).

This manual applies to the following versions of the software:

Software Name	Article number	Version number
BioPAT® Trace OPC® DA Server	BPT00PC	1.0.0

1.2 Accompanying Documents

These instructions describe how to install the software.

- ▶ In addition to this manual, observe the following documents:
 - OPC® Server Ethernet, user manual, version D-112011-01
 - BioPAT® Trace Multi Trace, Operating Manual
 - BioPAT® MFCS/win, Operating Instructions

1.3 Symbols Used

1.3.1 Warnings

CAUTION

Denotes a danger with risk that moderate or minor injury may result if it is **not** avoided.

1.3.2 Other Symbols Used

- ▶ Required action: Describes actions that must be performed.
- ▷ Result: Describes the result of the activities carried out.
- [] Text inside brackets refers to control and display elements

Figures on the Operating Display

Depending on the device configuration, the figures on the operating display of the device may differ from those described in these instructions.

2 Basic Principles of Software Use

2.1 Legal Information

2.1.1 Installation Instructions

These installation instructions or parts thereof must not be reproduced or transmitted to others in any form. All rights reserved by Sartorius Stedim Biotech GmbH in accordance with copyright law. The installation instructions are intended for use by the purchaser only. Transfer to third parties, whether free of charge or in return for payment, is not permitted.

2.1.2 “BioPAT® Trace OPC® DA Server” Software

The software contained on the “BioPAT® Trace OPC® DA Server” DVD-ROM is the property of Sartorius Stedim Biotech GmbH. Sartorius Stedim Biotech GmbH owns the copyright for the “BioPAT® Trace OPC® DA Server” software and will hold you liable for any damage incurred as a result of copyright violations on your part.

The license agreement for the “BioPAT® Trace OPC® DA Server” software will be displayed when you install the software (see Chapter “3.2 Installation”, page 12).

License Agreement

In particular, the following shall apply:

- With the exception of a backup copy, the software may not be reproduced, changed, reverse engineered, or modified by recompiling.
- The OPC® Server can manage several devices!
- The software is intended for use by the purchaser only. Transfer to third parties, whether free of charge or in return for payment, is not permitted.

If you experience problems with the enclosed software, please send an e-mail to trace@sartorius.com.

Any liability for the software of other developers provided on the DVD-ROM or software already installed on your system is hereby excluded.

Users shall be liable for the improper use of said software.

2.1.3 Trademark Rights

Microsoft® and Windows® are either registered trademarks or trademarks of Microsoft Corporation in the United States of America and | or other countries.

Other product names mentioned in these operating instructions may be trademarks or registered trademarks of the respective companies and are hereby acknowledged.

2.2 Safety Instructions

CAUTION

Property Damage due to Improper Use of the Software

Changes to the software through recompiling, incomplete or faulty inputs may lead to incorrect product tests and | or incorrect reports. Faulty inspections and faulty reports can result in property damage.

- Do not carry out any recompiling of the software. If any modifications to the software are required, these should only be carried out by Sartorius employees.
 - Please read the operating instructions before using the program.
 - Only use the program as described in the operating instructions.
 - The installation instructions and operating instructions should be stored such that they are always accessible to all individuals who work with the program.
 - The software can be operated correctly only on computers which fulfill the minimum requirements (Chapter „4 Specifications“, page 33).
-

2.3 Intended Use

The intended use of the software requires that you

- have installed the software on your system in accordance with the installation instructions,
- have read and understood the operating instructions,
- use the software only as described in the operating instructions,
- use the software only to control devices and components approved by Sartorius.

Improper Use

You are deemed to be using the software improperly if

- you change it by recompiling,
- you use it in ways other than those described in the operating instructions.

2.4 Equipment Supplied

The “BioPAT® Trace OPC® DA Server” installation software is delivered with the following equipment:

- “BioPAT® Trace OPC® DA Server”, installation software (on DVD-ROM)
- “BioPAT® Trace OPC® DA Server”, license key (printed on the DVD cover)
- “BioPAT® Trace OPC® DA Server”, installation instructions (printout)

2.5 Requirements

2.5.1 Operating Personnel

- The user has technical knowledge in biotechnology.
- The user must have experience in dealing with the software functions and elements of the user interface of the operating system (see Chapter “4 Specifications”, page 33).

2.5.2 Hardware

For the installation and execution of the “BioPAT® Trace OPC® DA Server” software, the computer must fulfill minimum requirements. See Chapter “4 Specifications”, page 33.

2.5.3 Operating System

An operating system must be installed for installation and execution of the “BioPAT® Trace OPC® DA Server” software (see Chapter “4 Specifications”, page 33).

2.5.4 Additional Software

Software Help

To use the software help, you must install software that can display PDF files. A suitable program is Adobe Reader, for example.

2.6 Software Description

The “BioPAT® Trace OPC® DA Server” software complies with the first specification of the OPC® Foundation and is intended for process data communication. It defines an interface between client software and server software for data exchange. An OPC® server enables one (or several) OPC® client(s) to access process data via this interface.

2.7 Software Setup

In this chapter, you will gain an overview of the software setup:

Make sure that

- “MFCS/win” (including “Support Package” from version 1) is installed,
- “OPC® Client” (from “MFCS”) is installed!

Type of action	Chapter
Configurations and installation: Configuring the settings for the operating system of the “BioPAT® Trace OPC® DA Server’s” computer Configuring the settings on the BioPAT® Trace system (e.g. IP address) Installing the “BioPAT® Trace OPC® DA Server” software	Chapter “3 Configurations and Installation”, page 11

3 Configurations and Installation

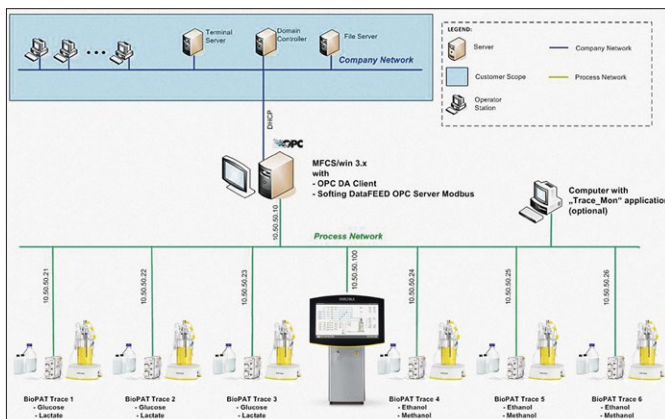
3.1 Preconfiguring the Operating System Settings

Tip:

Sartorius Stedim Biotech GmbH recommends installing the “BioPAT® Trace OPC® DA Server” software on a newly installed operating system to avoid any compatibility issues that may occur with pre-installed software.

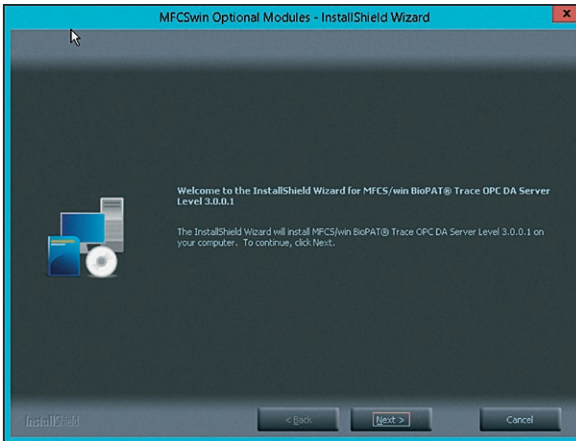
Before installing the software, it is necessary that you configure some settings in your operating system.

During installation, the operating system settings are checked. Incorrect settings in the operating system will lead to error messages or the installation being aborted.

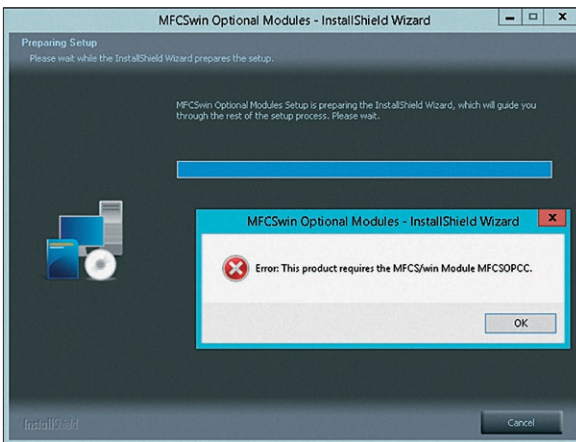


Layout example for installing the “BioPAT® Trace OPC® DA Server”

3.2 Installation

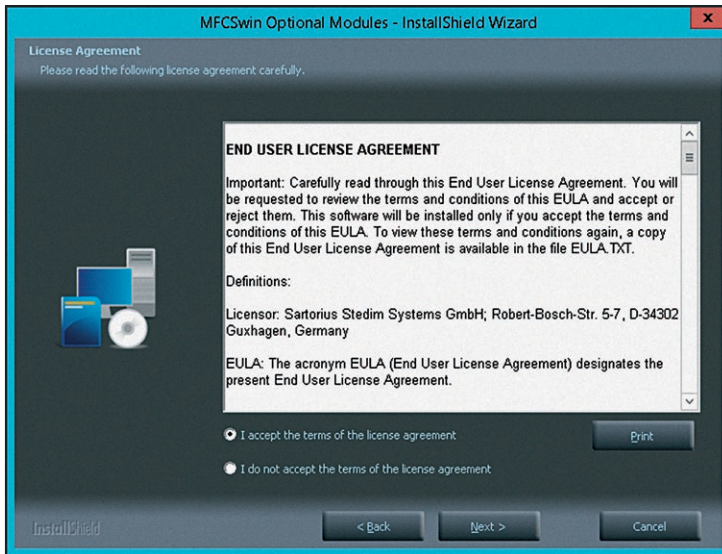


- ▶ Start the installation with [Next >].

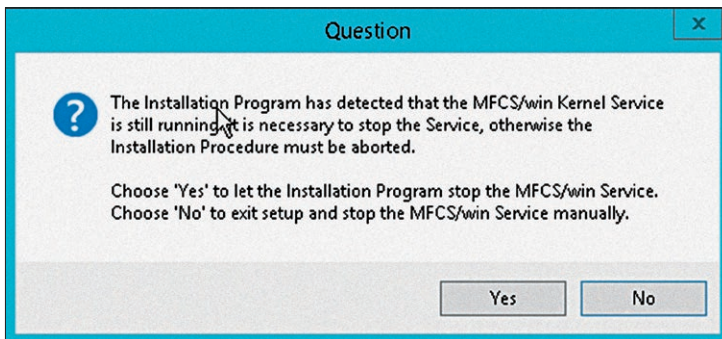


- ▷ This screen appears when the requirements for installation are not met.
 - ▶ End the installation.

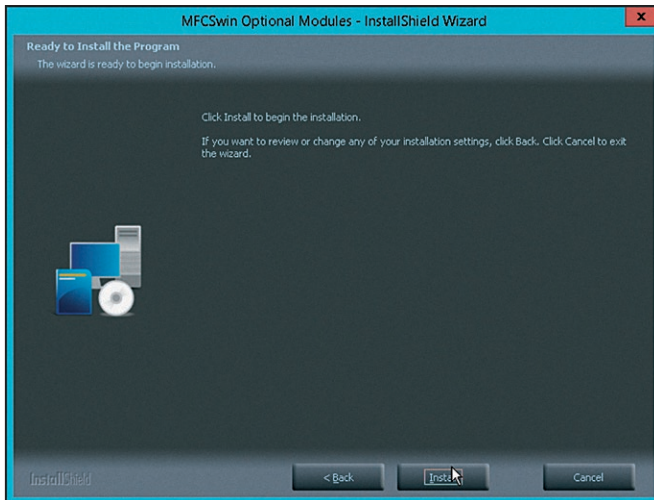
- ▶ Make sure that all system requirements are met.
- ▶ Carry out a restart.
- ▶ Continue with the installation process.



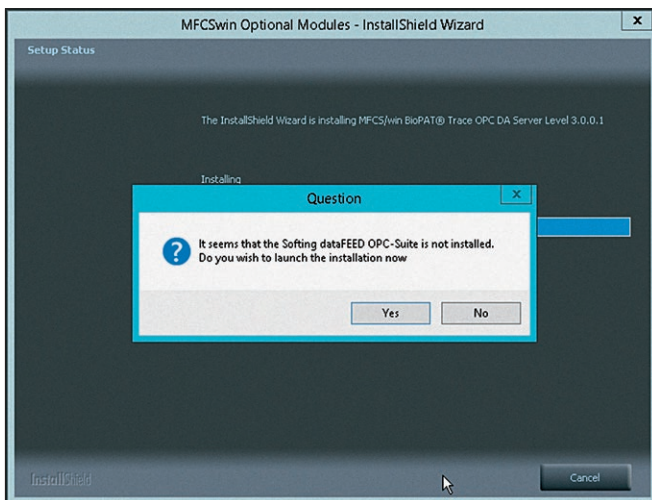
- ▶ Agree to licensing terms and continue with [Next >].



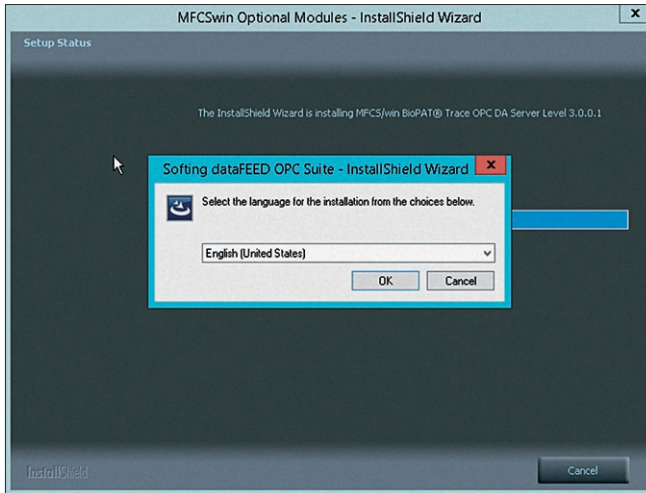
- ▶ Select [Yes] to continue.



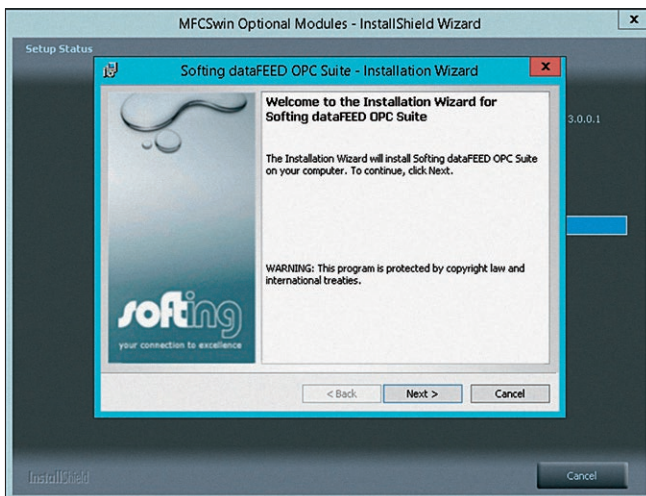
► [Install] to start the installation.



► [Yes] to select “dataFEED”.



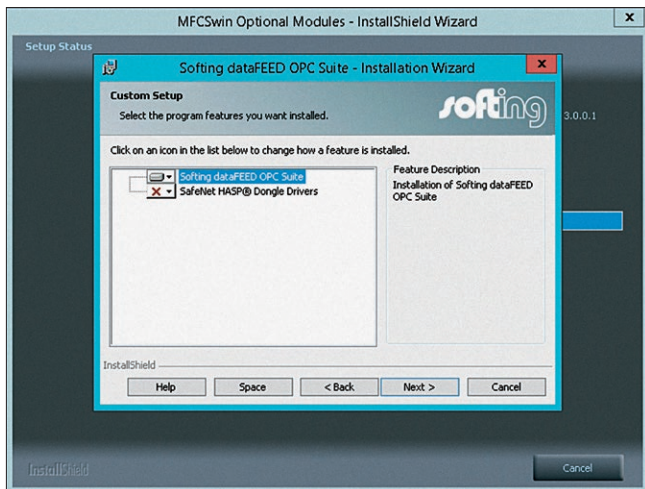
- ▶ Selecting the language for the “dataFEED Suite” setup.



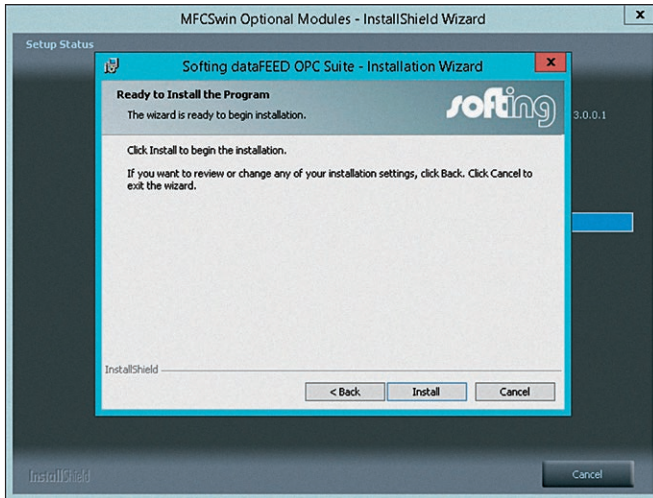
- ▶ Selecting [Next >] to install the “dataFEED Suite”.



► Agree to licensing terms and continue with [Next >].



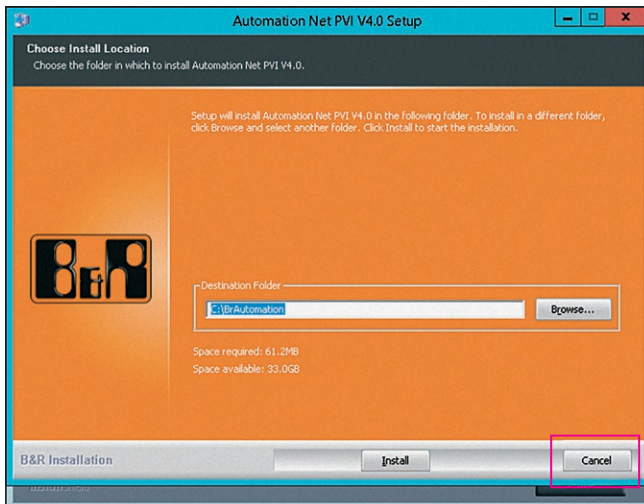
► Confirm this display with [Next >].



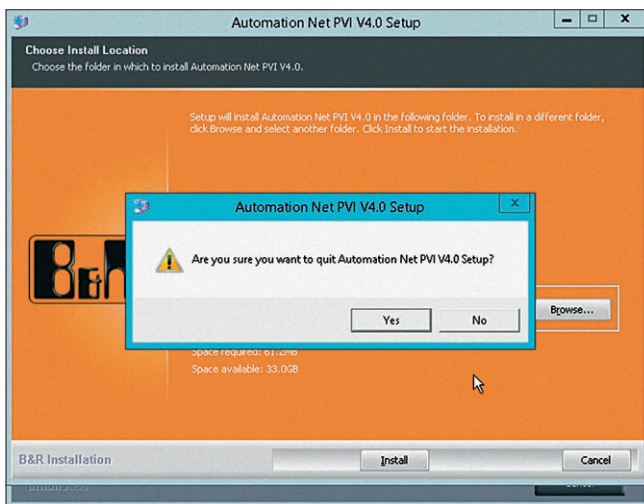
- ▶ Start the installation with [Install].



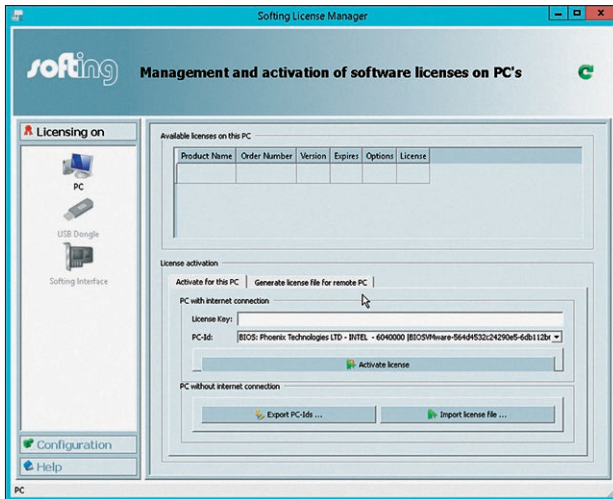
- ▶ Confirm completion of the installation with [Finish].



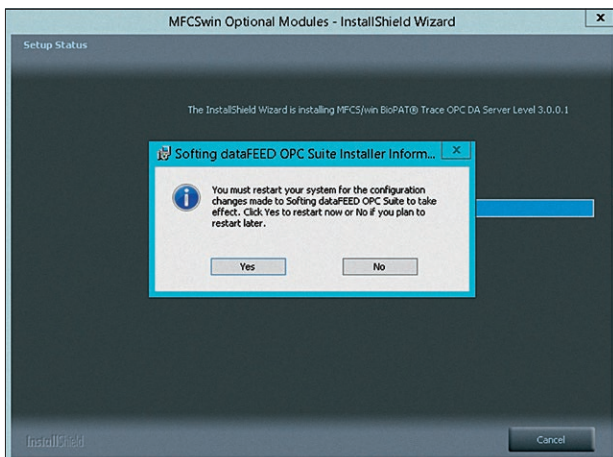
► Negate the prompt for “Third Party Software” with [Cancel].



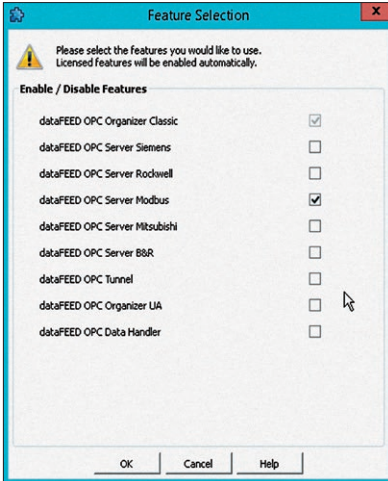
► Confirm cancellation of the “Third Party Installation” process with [Yes].



- ▶ The license manager is started.
- ▶ Enter the “License Key” (printed on the DVD cover)



- ▶ After installation, carry out a “Restart” by selecting [Yes].

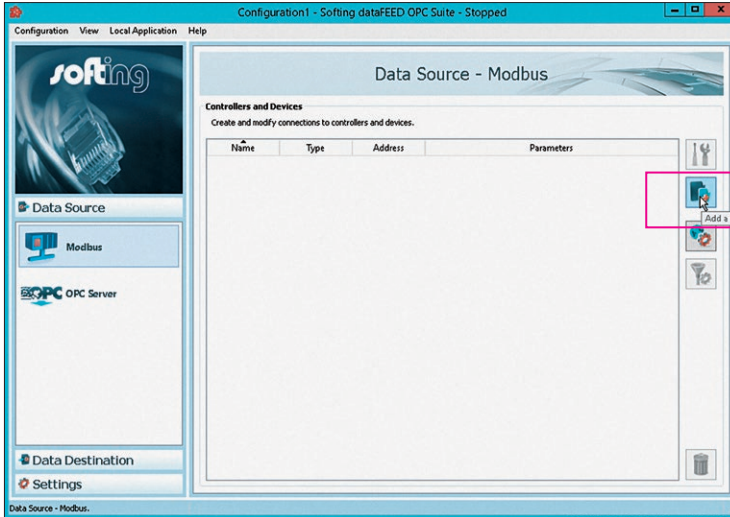


- ▶ Select this selection field only (if necessary, delete the marking of all other fields).
- ▶ Confirm with [OK].
- ▷ The installation is completed.

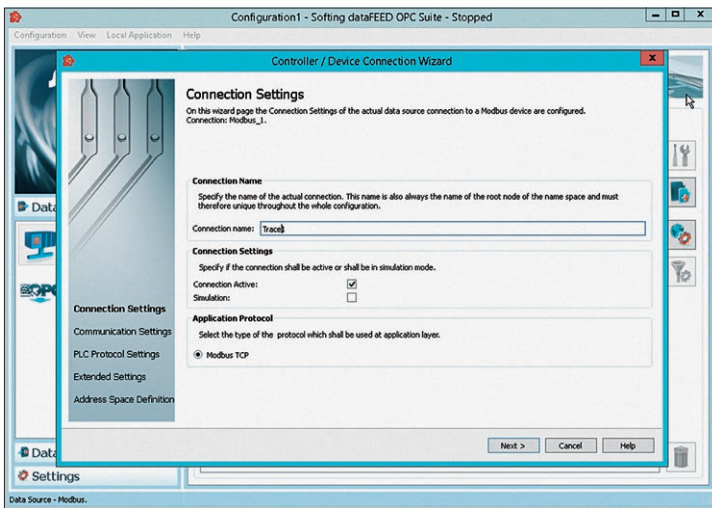
3.3 Starting the Configuration



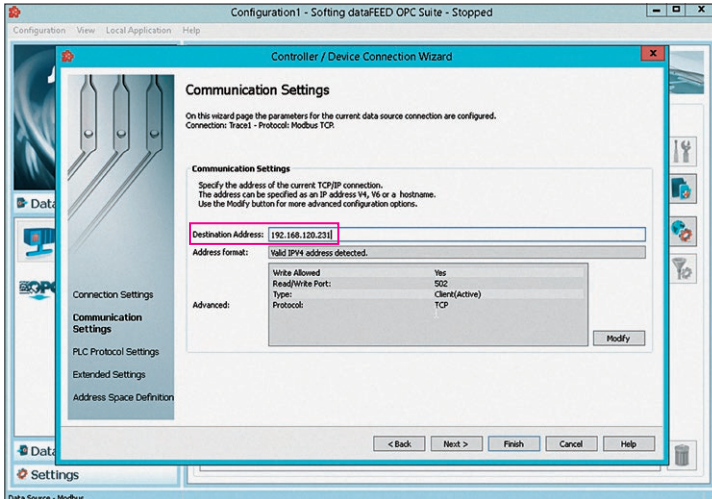
- ▶ Select [dataFEED OPC®...] to start the configuration.



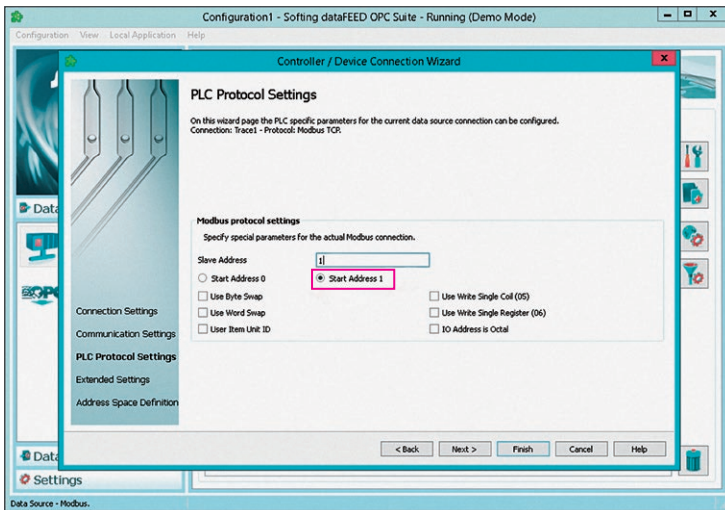
- ▶ Select [Add a new connection/data] to add a data source.



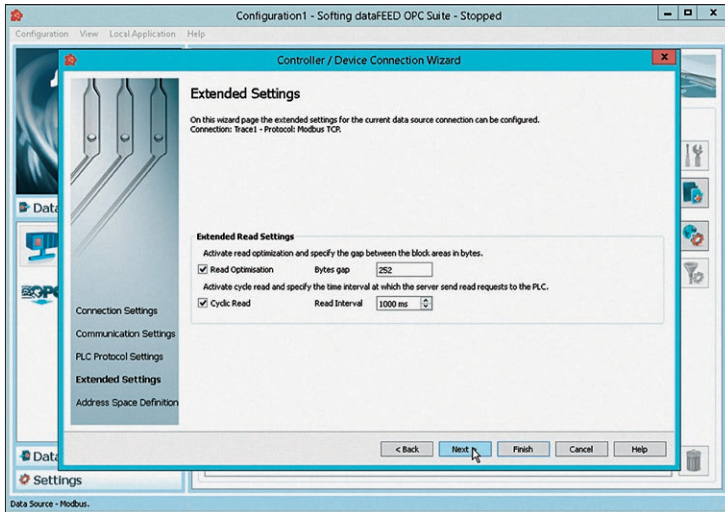
- ▶ Enter [Trace1].



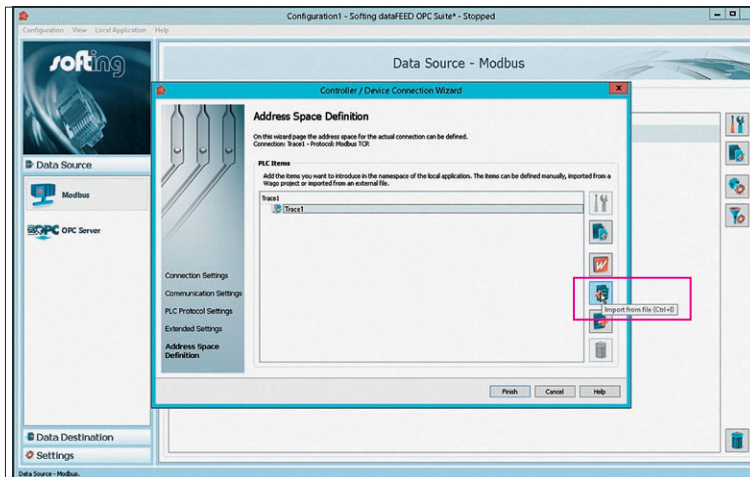
► Enter the Trace (Ethernet) address.



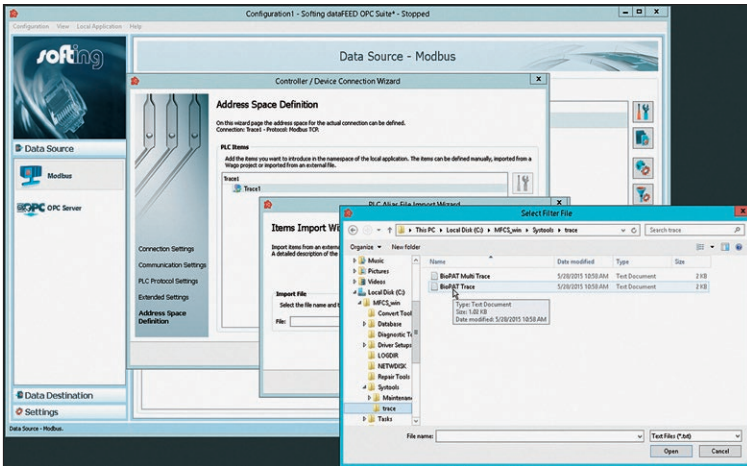
► Select [Start Address 1].



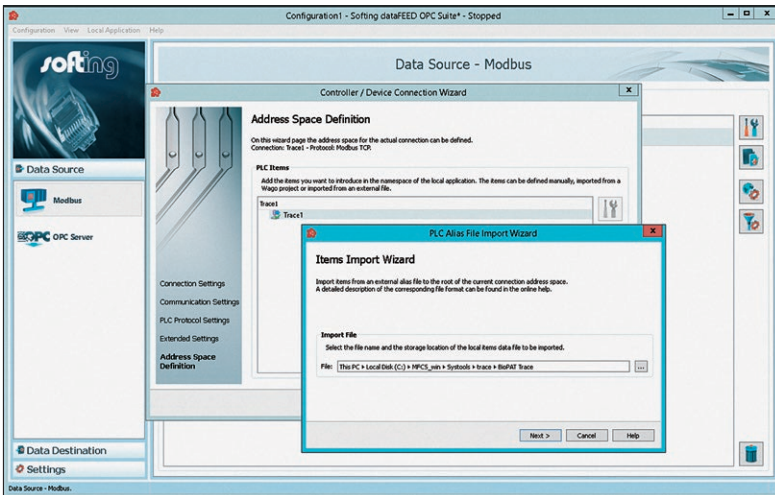
- ▶ Select [Next >] to continue the installation process.



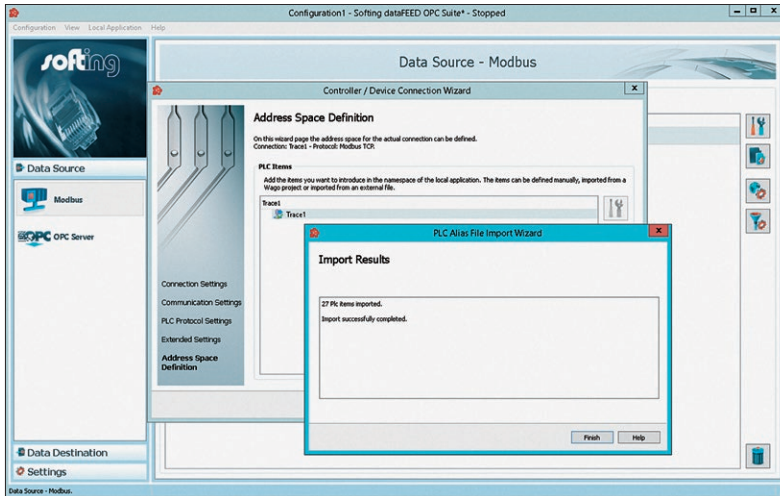
- ▶ Select [Import].



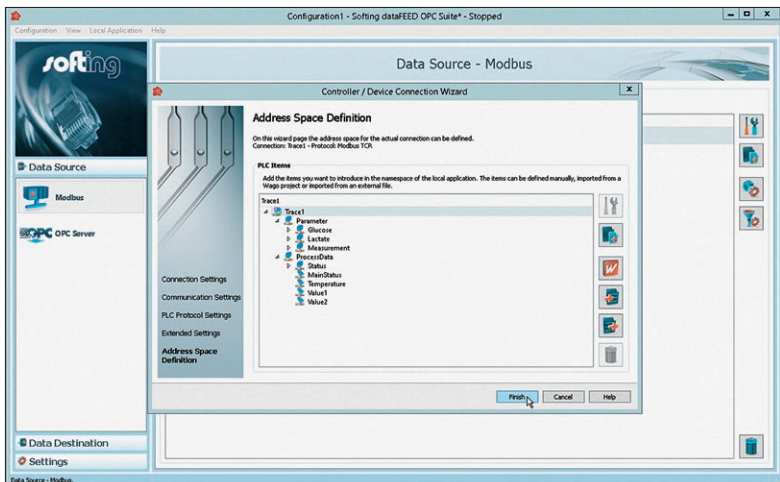
► Select “BioPAT® Multi Trace” or “BioPAT® Trace” (single).



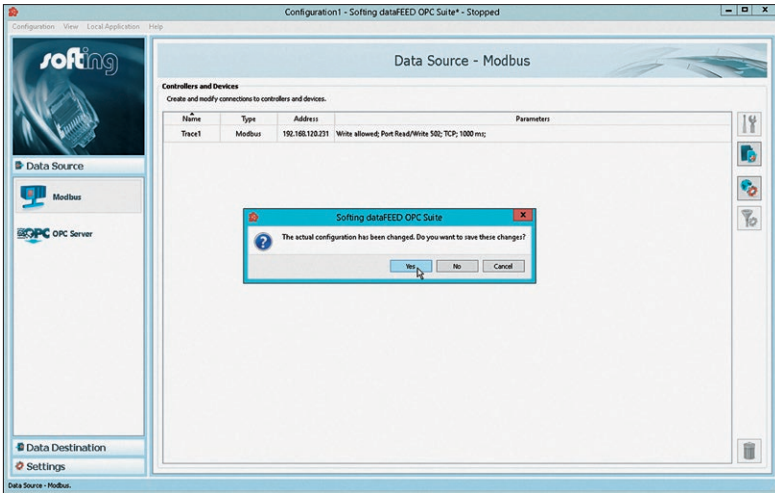
► Continue with [Next >].



- ▶ Confirm import with [Finish].

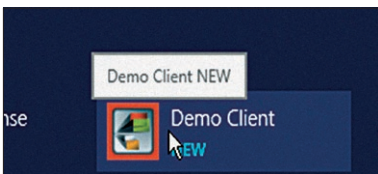


- ▶ What is imported will be displayed.
- ▶ Confirm the import with [Finish].

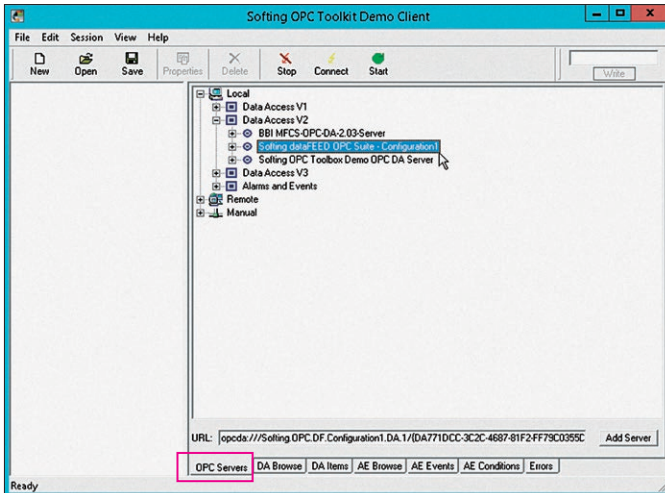


- ▶ The program is closed. The configuration of the OPC® Server is completed.
- ▶ After saving, confirm the prompt with [Yes].

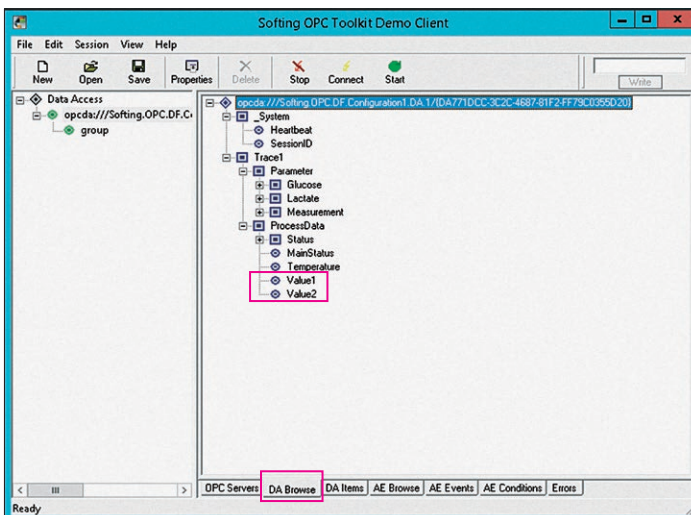
3.4 Verifying the Correct Display of Values



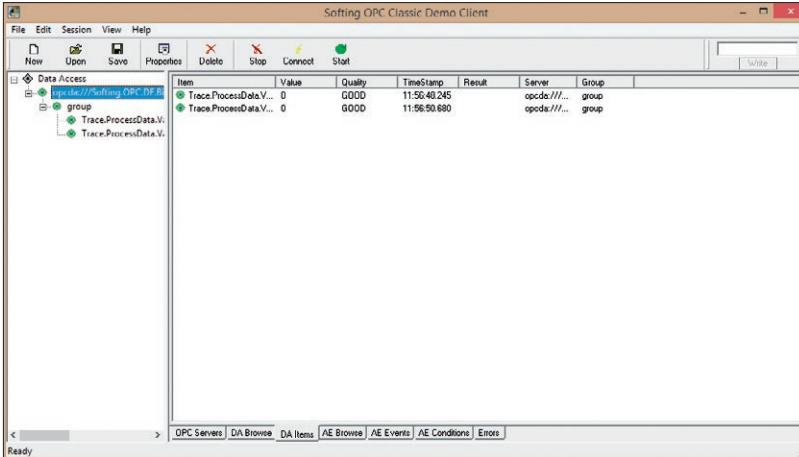
- ▶ Start the verification with [Demo Client / NEW].



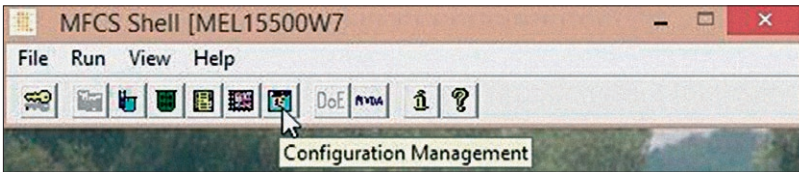
- ▶ Select the OPC® Server via “Softing dataFEED OPC Suite - Configuration”.



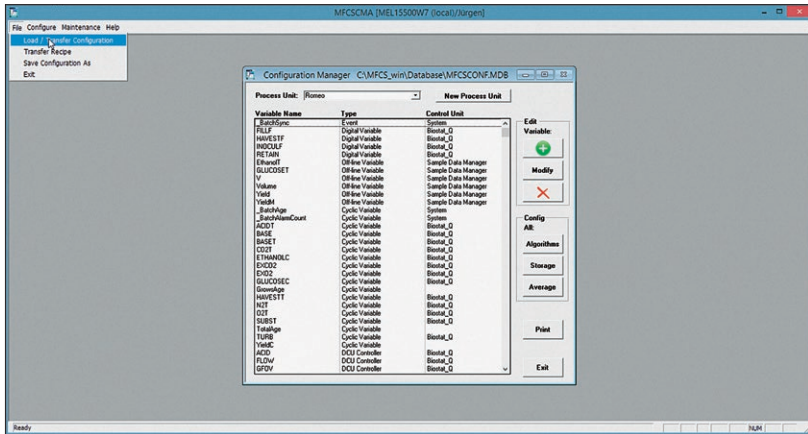
- ▶ Select desired items from the “Browsing Tree”.



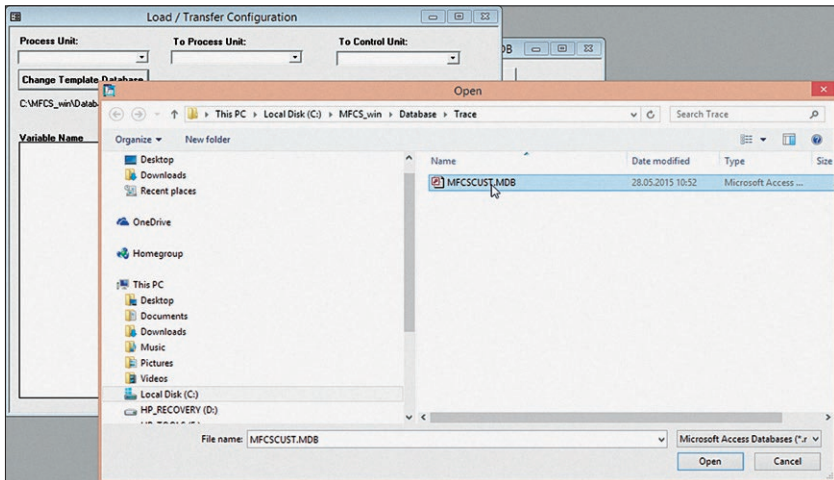
► Verify displayed values.



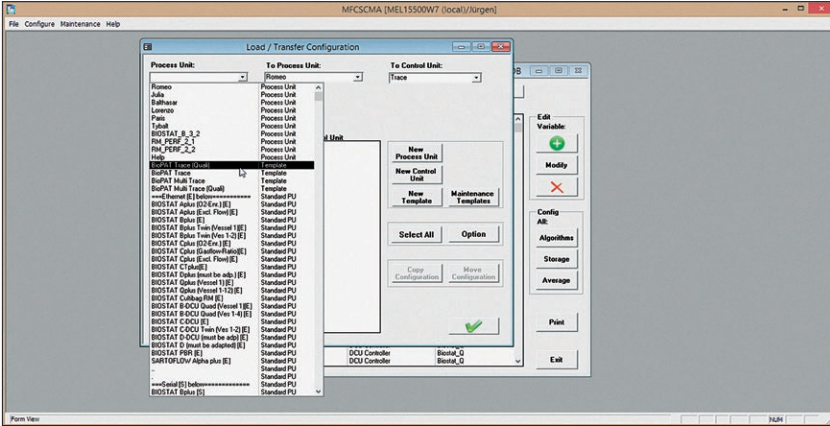
► Start the “MFCS Shell” - “Configuration Management”.



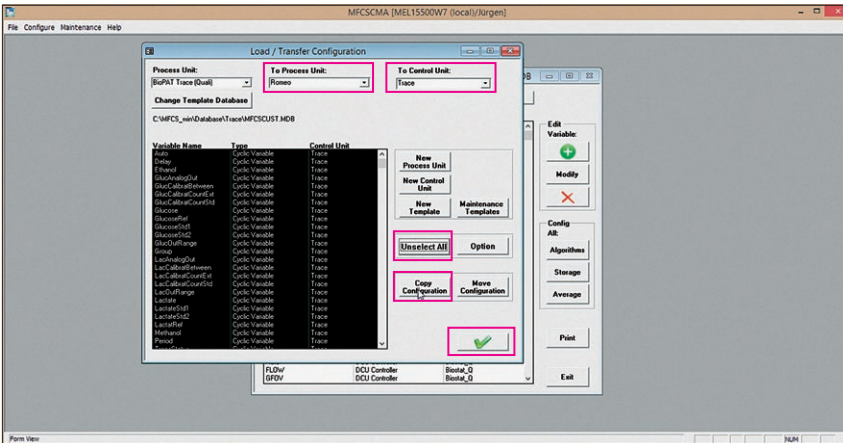
- ▶ Create variables in “MFCS/win” via the “Configuration” menu (see “BioPAT® MFCS/win” Operating Instructions).



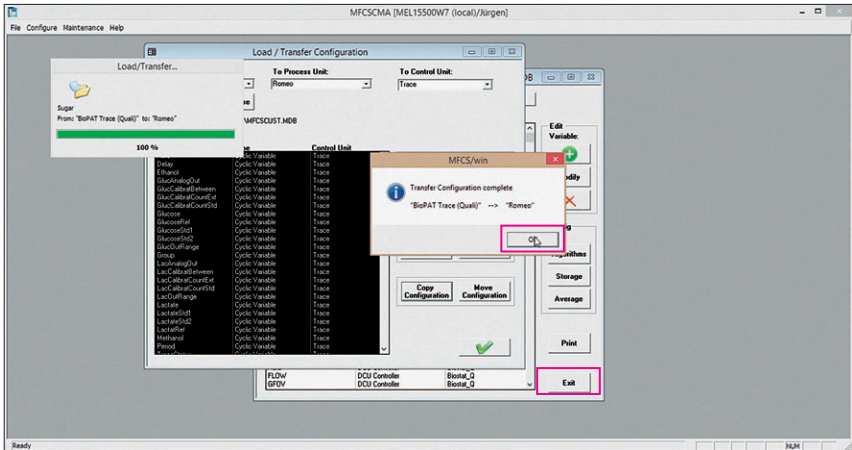
- ▶ Select “Change Template ...” and select the appropriate template database.
- ▶ Select the desired “Configuration” from the list.



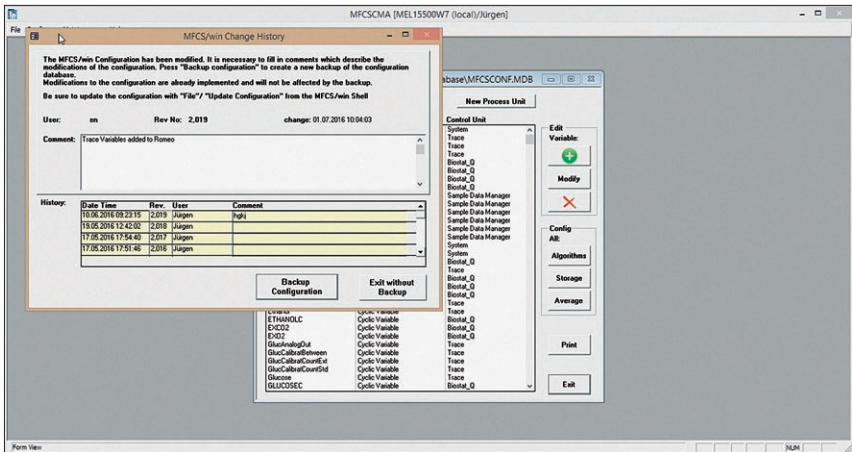
► Enter the variables in the parameter list.



- ▷ This list is displayed.
- Select [Select All].
- Select storage locations [To Process Unit] and [To Central Unit].
- Select [Unselect All].
- Select [Copy Configuration] and confirm.
- ▷ The installation has now been fully completed.



- ▶ Confirm with [OK].
- ▶ End with [Exit].



- ▶ This display appears.
- ▶ Enter the changes in “Change History” for traceability.
- ▶ Finish the verification of the correct display of values with [Backup Configuration].

3.5 Initial Operation of the OPC® DA Server

Ensure the following prerequisites before initial operation:

- ▶ The values on the device must also be displayed via the OPC®!
- ▷ The display of the values via the OPC® shows the correctly executed installation.
- ▶ Perform all further operational steps according to the corresponding operating instructions (see Chapter “1.2 Accompanying Documents”, page 4).

4 Specifications

Important:

The approved “MFCS/win 3.0 Support Pack 2015” must be installed on the computer in order to install the BioPAT® Trace OPC® DA server.

General Hardware Requirements

- Intel® Core™ i3 or higher
- Main memory 8 GB (minimum: 4 GB)
- Hard disk 500 GB (minimum 250 GB)
- Graphic card
- DVD-ROM drive
- Mouse
- Uninterruptable Power Supply Unit (UPS)
- Operating System:

General System Requirements

- Microsoft Windows 7 SP1
- Microsoft Windows 8.1
- Microsoft Windows Server 2008 R2 Sp1
- Microsoft Windows Server 2012
- Microsoft Windows Server 2012 R2

Operating System Language

- English
- German (other languages are not supported)

5 Appendix

5.1 Additional Documentation

- In addition to these installation instructions, you will find all necessary technical documentation in the operating manual on this software.
- If customer-specific modifications were implemented, the appropriate documents can either be attached to the operating manual or to the software as separate documents.

Sartorius Stedim Biotech GmbH
August-Spindler-Strasse 11
37079 Goettingen, Germany

Phone: +49 551 308 0
www.sartorius.com

The information and figures contained in these instructions correspond to the version date specified below.

Sartorius reserves the right to make changes to the technology, features, specifications and design of the equipment without notice.

Masculine or feminine forms are used to facilitate legibility in these instructions and always simultaneously denote the other gender as well.

Copyright notice:

This instruction manual, including all of its components, is protected by copyright.

Any use beyond the limits of the copyright law is not permitted without our approval.

This applies in particular to reprinting, translation and editing irrespective of the type of media used.

© Sartorius Germany

Last updated:
10 | 2016