

Operating Instructions

# PMA Management Software

For PMA.Evolution | PMA.HD | PMA.Quality - USB





# Contents

<b>1 Overview</b> .....	4
1.1 Downloading .....	4
1.2 Counting .....	4
1.3 Using the Functions "Scale Setup   Intro Text" .....	4
<b>2 Installation</b> .....	5
2.1 System Requirements .....	5
<b>3 Applications</b> .....	6
3.1 Counting .....	6
3.2 Using the Functions "Scale Setup   Intro Text" .....	7
<b>4 General Information</b> .....	9

---

**Important Note:**

Please do not run the PMA Management software at the same time with a paint-mixing application. Otherwise, this can result in mutual interlock signals that will block communication with the scale interface port.

---

# 1 Overview

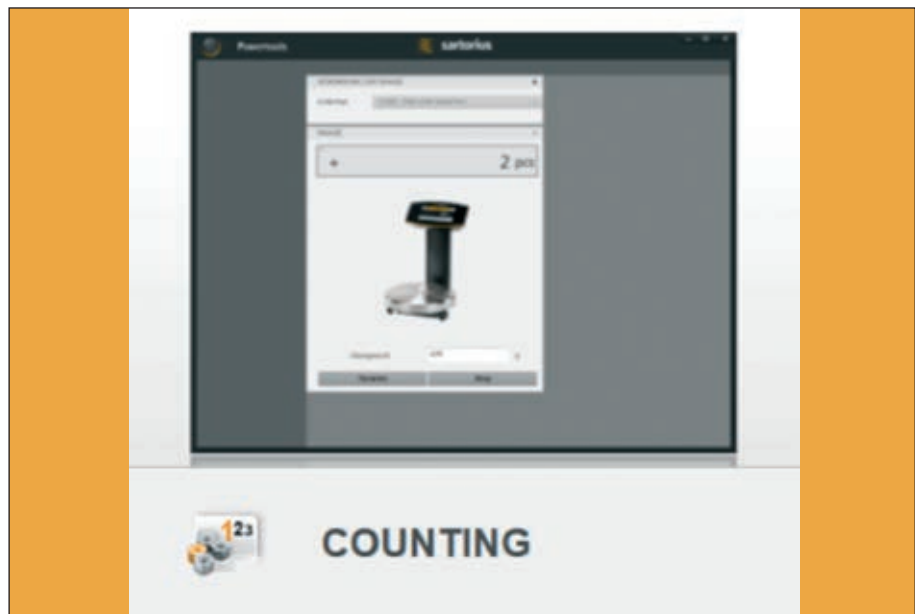
## 1.1 Downloading

The PMA Management Software is available on our website for downloading at: [www.sartorius.com/paintmixing](http://www.sartorius.com/paintmixing).

This software program has the applications listed below:

## 1.2 Counting

- For easy inventory control (e.g., counting screws, nuts, etc.)



## 1.3 Using the Functions "Scale Setup | Intro Text"

- For easy calibration and adjustment, as well as for setting the scale functions
- For customizing scale messages (e.g., for branding)



## 2 Installation



- ▷ Unzip the folder "PMA Management Software" on your computer.
- ▶ To install the PMA Management tools, double-click on Setup.exe. Then the following steps will be automatically carried out:
  - ▷ The Counting application and the Scale Setup | Set Intro Text functions will be installed.
  - ▷ Please note that guided installation may take minutes, so please wait to ensure the program is successfully installed.
  - ▷ The Sartorius Powertool icon will be created on your desktop. Double-click to open.
  - ▷ The language of the PMA Management Software will be the language selected for your computer's operating system. (If a specific language is not supported, English will be used as the default).

### 2.1 System Requirements

- Computer with Windows® XP | Vista | 7 | 8 | 10 operating system

### 3 Applications

#### 3.1 Counting

The Counting application enables you to count parts that each have approximately equal weight (e.g., screws and nuts), by setting a reference sample quantity.

##### Running the Application

1. Connect your computer to the scale.
  - ▶ Select the COM port and click on the orange button.
  - ▷ When your scale has been successfully connected, the button will turn gray.



2. Change the reference sample quantity, if required. The default setting of the reference sample quantity is 10. You can set the reference sample quantity to any desired quantity.

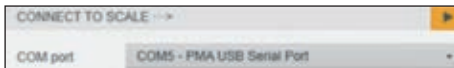
To do this, place an empty container on the scale and click on Tare to zero the display. Add your reference sample quantity to container (in this example: 5 units) and click on "Start.". The quantity is displayed.



3. Place parts in the container to have the scale determine the count.
  - ▷ The total number of units will be displayed.



- ▶ Toggle between the quantity counted and total weight by clicking on pcs|g.



## 3.2 Using the Functions “Scale Setup | Intro Text”

Use the Scale Setup application to input a short information text (25 characters max.) that will be sent to the scale. This message will then appear each time you power on the scale. You can set the scale to accommodate ambient conditions without accessing the scale menu as you will be able to easily read off all important scale information.

### Running the Application

1. Connect your computer to the scale:
    - ▶ Select the COM port and click on the orange button.
    - ▷ When your scale has been successfully connected, the button will turn into gray.
  2. Create an introductory (“intro”) text:
    - ▶ Type the desired message in the Text box (25 characters max.)
    - ▷ When you click on the diskette icon, your text will be sent to the scale and saved.
  3. Change settings:
    - ▷ Use the drop-down menu to select the desired settings.
    - ▷ If you click on “Menu Read Only” to activate a checkmark, you will enable the menu lock, preventing any changes from being made to the scale settings.
    - ▷ To unlock the scale menu, remove the checkmark.
- ▷ To read the text, click on the arrow icon.  
Repeat this procedure to change the text already entered.
- ▷ To save your settings, click on the diskette icon.  
▷ Click on the arrow icon to restore the factory settings of the scale.

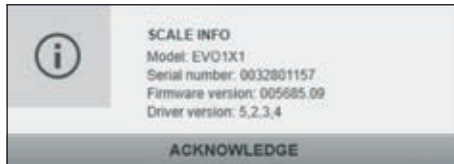


#### 4. Calibrate and adjust the scale (e.g., PMA.Evolution):

You will need a calibration weight with a nominal mass of 5,000 g and an accuracy of + 0.075 g.

To ensure accurate calibration and adjustment, the scale must warm up for at least 30 minutes after initial connection to the power supply.

- ▶ Tare the scale before starting.
- ▶ Click on the calibration button; -5000 will flash on the display.
- ▶ Center the calibration weight on the weighing pan.
- ▷ Calibration will now be performed automatically.
- ▶ After calibration, remove the weight from the weighing pan.

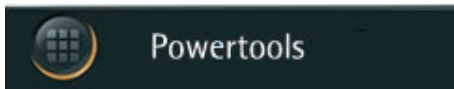


#### 5. Get scale information:

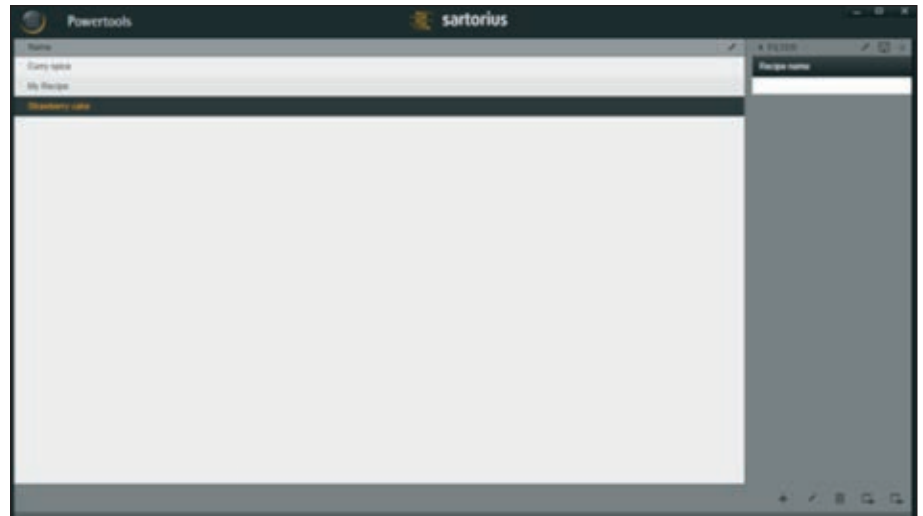
When you click on the scale information button, the model number, serial number, firmware version and driver version will be displayed.



## 4 General Information



If more than one application installed in the PMA Management Software, select the desired application by clicking on the icon in the top left corner.



Current applications of PMA Management Software:

1. Counting
2. Scale Setup, including Set Intro Text



Sartorius Lab Instruments GmbH & Co. KG  
Otto-Brenner-Strasse 20  
37079 Goettingen, Germany

Phone: +49.551.308.0  
Fax: +49.551.308.3289  
www.sartorius.com

The information and figures contained in these instructions correspond to the version date specified below.

Sartorius reserves the right to make changes to the technology, features, specifications and design of the equipment without notice.

Masculine or feminine forms are used to facilitate legibility in these instructions and always simultaneously denote the other gender as well.

Copyright notice:

This instruction manual, including all of its components, is protected by copyright. Any use beyond the limits of the copyright law is not permitted without our approval. This applies in particular to reprinting, translation and editing irrespective of the type of media used.

© Sartorius Germany

Last updated:  
09 | 2016