

## ProfiLine

Explosion protected

OEM weigh cells

WZA6202-NX

WZA623-NX


ATEX approved



WZA...	6202-NX	623-NX
Capacity	6200 g	620 g
Readability	10 mg	1 mg

### Explosion protected weigh cell for use in hazardous areas

- Zone 1 and 2 with gasses of group IIC and temperature class T4
- Zone 21 and 22 for dust atmospheres (Tmax = 80°C )

 II 2 G Ex ib IIC T4  
 II 2 D Ex ib IIIB T80 °C  
 -10°C ≤ Ta ≤ +40°C  
 FM15ATEX0013X

### The weigh cell consist of two parts:

- Weigh cell mechanical system in stainless steel IP44 housing
- Stainless steel electronic box
- Monolithic weighing system with a resolution of 1 mg and 10 mg
- Excellent weighing technology bundled with easy adaptation
- Adjustable load receptor with overload protection, for WZA623-NX with optional lift off protection
- Possibility for under floor weighing
- Fast warm-up by separation of weighing system and electronics
- RS232C interface for configuration and data transfer
- Optional PC-software or display to handle weighing data and configuration

## Important accessories

- The interface converter YDI05-Z installed in the non hazardous area
- Power supply



Electronic box



YAC01NX (optional)



Weigh cell with display, interface convertor and power supply

## Technical Data

Model	WZA6202-NX	WZA623-NX
Capacity	6200 g	620 g
Readability	10 mg	1 mg
Preload, minimal <sup>1)</sup>	0 g	600 ± 8 g
Repeatability (standard deviation) <sup>2)</sup>	± 10 mg	± 1 mg
Linearity	± 20 mg	± 2 mg
Measuring time <sup>2)3)</sup>	1.5 s   ± 10mg	1.5 s   ± 1 mg
Operating temperature range	+10 ... +30 °C	+10 ... +30 °C
Allowable temperature range	+5 ... +40 °C	+5 ... +40 °C
Weigh cell dimension	68 × 200 × 1292 mm (base × height)	68 × 200 × 92 mm (base × height)
Electronic   PCB dimension	270 × 160 × 48 mm (base × height)	270 × 160 × 48 mm (base × height)
Cable length weigh cell to electronics	1 m	1 m
Load receptor (adjustable, with overload protection)	64 mm × 30.5 mm (diameter × height)	42 mm × 26 mm (diameter × height)
Under floor load receptor	M3 thread	M3 thread
<b>Options   Accessories</b>		
Power supply unit YPSC01-Z for non-hazardous area	Option N10 and N5; Configurable power supply and communication system for use in non-hazardous areas (USA) 100 – 240 VAC, 40VA, Cable length: AC 3 m   DC 20 m	
	Option N9 and N5; Configurable power supply and communication system for use in non-hazardous areas (EU) 100 – 240 VAC, 40VA, Cable length: AC 3 m   DC 20 m	
YDI05-Z Option M52 and M56 Interface converter in the non-hazardous area	RS232C cable for PC with 9-PIN COM Port, length 3 m cable from electronic box to interface converter 20 m RS-485 interface available on request	
Windows configuration software for test and adjustment	SartoCasSuite public	SartoCasSuite public
Display for the hazardous area with 2.5m cable	YAC01NX	YAC01NX
Weigh pan to realize lift off protection	Not available	YWPO1WZA

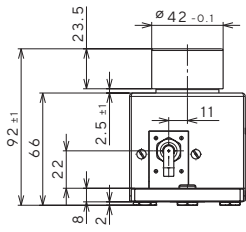
1) the preload can be configured by using the SartoCasSuite software; higher preload will reduce the weighing range

2) depending on measurement equipment set-up and conditions;

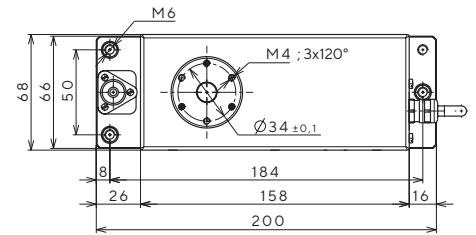
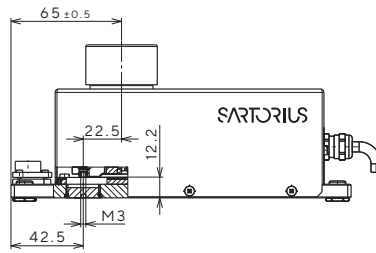
3) measuring time is the time in which the measured value is in the given range around the static end value; test weight is approx. 25% of the weighing range.

## Weigh cell

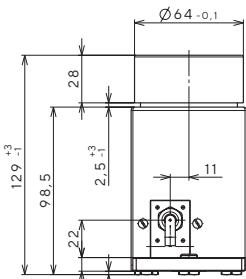
### WZA623-NX



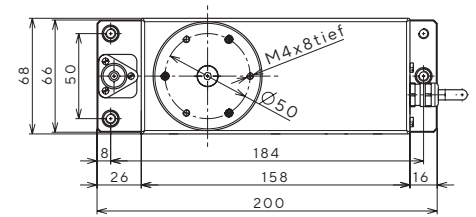
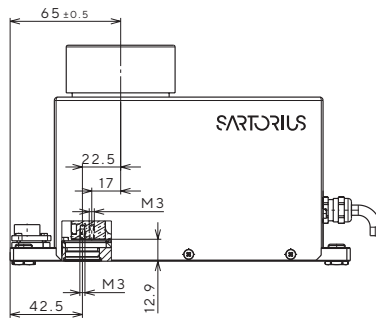
Kabellänge: 1 m  
Cable length: 1 m



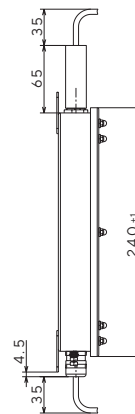
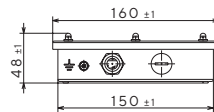
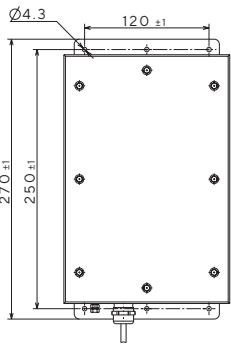
### WZA6202-NX



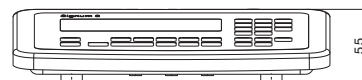
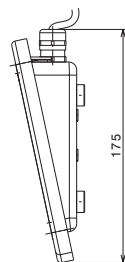
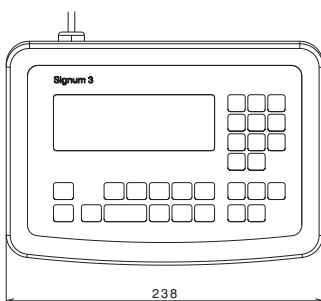
Kabellänge: 1 m  
Cable length: 1 m



## Electronic box



## Optional YAC01ED Display and Control Unit



Dimensions in mm

**Germany**

Sartorius Lab Instruments GmbH & Co. KG  
Otto-Brenner-Strasse 20  
37079 Goettingen  
Phone +49 551 308 0

**France & Suisse Romande**

Phone +33 170 62 50 00

**Finland & Baltics**

Phone +358 9 755 951

**Italy**

Phone +39 0362 5557 11

**U.K.**

Phone +44 1372 737159

**USA**

Toll-free +1 800 635 2906

**China**


Phone +86 21 6878 2300

**Japan**

Phone +81 3 6478 5200

**South Korea**

Phone +82 31 622 5700

 For further contacts, visit  
[www.sartorius.com](http://www.sartorius.com)