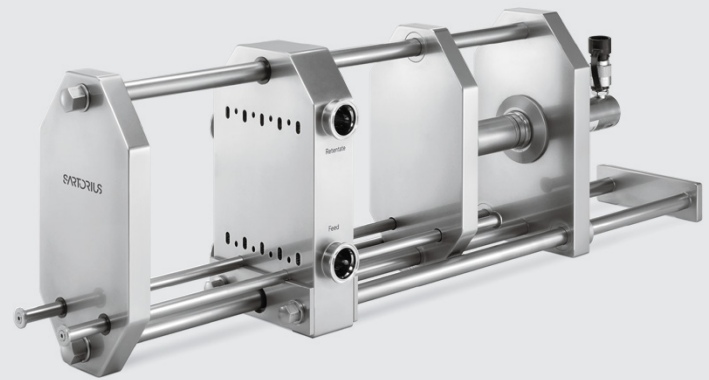


Sartoflow[®] 20 Stainless Steel Holder

Hydraulic Filter Holder
for Sartocub[®] Cassettes



Description

Sartoflow[®] 20 Holder

The Sartoflow[®] 20 stainless steel holder is optimized for use with up to 20 Sartocub[®] production scale Tangential Flow Filtration (TFF) cassettes or four Sartocubes[®] (max. 14 m²). It is designed for applications from 200 L to 2,500 L volume.

Target use:

- Process development
- Preclinical trials
- Clinical trials
- Pilot lots
- Production

Sartocub[®] cassettes are available with Hydrosart[®] or Polyethersulfone membrane types.

The Sartoflow® 20 system covers the whole range of pharmaceutical and biotechnological TFF applications like concentration and diafiltration of proteins, vaccines, viruses, antibodies, oligo nucleotides, endotoxin removal etc. The system is also suitable for cell harvesting and clarification processes. The family of Sartorius TFF holders feature the latest advances in TFF design:

- Vertical orientation of cassettes
- Self-draining systems
- In-line steamable
- No welds
- Minimized hold-up volume

The self-draining Sartoflow® 20 filter holder is part of a modular micro- and ultrafiltration system and fits up to 20 Sartococon® filter cassettes.

The Sartococon® cassettes are placed between the filter and clamping plate, without a need for additional gaskets. It is not necessary to remove the clamping plate for installation of the cassettes. Place the cassettes on the guide rods and close the holder with the oil hydraulic system. Manual driven hydraulic pump and automatic hydraulic pumps are available.

The clamping pressure can be controlled by an oil pressure gauge of a manual or automatic hydraulic pump. This allows very accurate and reproducible clamping conditions. Defined clamping conditions are essential, especially for steaming in place applications, but it is also very valuable when cassettes have to be changed frequently. The Sartoflow® 20 holder offers high performance production scale technology for every pilot and production scale facility.

The vertical positioning of the cassettes allows complete draining of retentate and permeate channels by gravity during harvesting and steaming procedures.

The Sartoflow® 20 flow distribution plate is machined from a single piece of stainless steel. Its sanitary Tri-Clamp connections are not welded but machined from the same plate. This eliminates potential problems associated with welds and ensures a long service life and a safe and reliable connection to other equipment. The feed and retentate connectors are located on one side of the plate. This allows easy integration into any skid design and ensures a compact system with low minimum working volume.

Connectors are situated to eliminate potential air locks and to ensure thorough cleaning and total product recovery.

Features	Benefits
Vertical orientation	Self-draining Self-venting
Tri-Clamp connectors	Safe fit of accessories
No welds	No corrosion
Steamable	No cross contamination
Fits up to 20 Sartococon® cassettes or four Sartocubes®	High flexibility for up to 2,500 L working volume
Hydraulic closure	Precise and reproducible clamping conditions

Technical Data Specifications

Materials of Construction	
Filter and clamping plate	316 L (1.4435) stainless steel, grinded or electro polished
Connectors	Sanitary Tri-Clamp flange
Surface finish, grinded	Ra ≤ 0.4 µm
Closure	Lukas hydraulic ram ACM 10/150
Maximum number of cassettes	20 Sartococon® cassettes (max. 14 m²) 4 Sartocubes®
Dimensions (L × W × H)	1,230 × 240 × 348 mm
Weight	Approx. 80 kg

Accessories and Order Information

Sartocon® single-use adapter plates	17546---113-C
Sartocon® flush plate PP-DWST	302030C-C
Sartocon® dummy modules PP-DWST	
20 mm	302020D-C
40 mm	302040D-C
100 mm	302100D-C
Handhydraulic set for SF 10 or SF 20 Set: Handhydraulic pump manometer, pressure hose, needle valve	1ZW---0004
Sartocon® adapter plate (round to oval adapter)	302020A-C
Sartoflow® Wedge	U1-SCUBE-WEDGE
Sartoflow® Heatshield	1ZJO--0001
Threaded spacer nominal length 100 mm	17000---309
Threaded spacer nominal length 65 mm	17000---314

Included with Filter Holder

	Product Number	Units
Sartoflow® Wedge	U1-SCUBE-WEDGE	4
Sartoflow® Heatshield	1ZJO--0001	1
Threaded spacer nominal length 100 mm	17000---309	2
Threaded spacer nominal length 65 mm	17000---314	1
Dummy module (100 mm)	302100D-C	3
Dummy module (20 mm)	302020D-C	4

Sartoflow® 20, 316 L (1.4435)


Order Number	Norm	F/R [mm]	P [mm]	Mirror-inverted
179-2DD380260E	DIN	38	26	
179-2DZ348221E	Zoll	34.8	22.1	
179-2DI384237E	ISO	38.4	23.7	
179-2DJ357230E	JIS-G	35.7	23	
179-2DD380260EM	DIN	38	26	■
179-2DZ348221EM	Zoll	34.8	22.1	■
179-2DI384237EM	ISO	38.4	23.7	■
179-2DJ357230EM	JIS-G	35.7	23	■

Germany

Sartorius Stedim Biotech GmbH
August-Spindler-Strasse 11
37079 Goettingen
Phone +49 551 308 0

USA

Sartorius Stedim North America Inc.
565 Johnson Avenue
Bohemia, NY 11716
Toll-Free +1 800 368 7178

 For further contacts, visit
www.sartorius.com

Specifications subject to change without notice.

© 2022 Sartorius Stedim Biotech GmbH, August-Spindler-Strasse 11, 37079 Goettingen, Germany

DIR No.: 2791457-000-00 | Order No.: 85030-530-83 | Status: 10 | 12 | 2022