



Off-The-Shelf Standard Filter Housings

Filter Cartridge Housings
for the Biopharmaceutical
Industry

Simplifying Progress

SARTORIUS

A New Performance of Delivery

Short Delivery Time

Sartorius Stedim Biotech standard filter housings meet the highest requirements of the biopharmaceutical industry. Controlled production engineering is a guarantee for outstanding quality in processing and operational safety. All filter cartridge housings comply with Pressure Equipment Directive PED 2014|68|EU and design code AD2000. Our housings are equipped with FDA | USP Class VI certified gasket materials. Meticulously processed surfaces ensure operational safety wherever sterility and cleanability are concerned.

The following housings can be ordered directly at Sartorius from stock. In case stock is sold out, with a short lead time.

General housing data

Operation pressure	1 bar up to +10 bar
Operation temperature	-10°C up to +150°C
Surface Inner Outer	0.5 µm 1.6 µm (electro-polished)
Medium group	1 (dangerous)
PED	DGRL 2014 68 EU
Design-Code	AD2000
Housing material „L“	AISI 316L (1.4404 1.4435)
Gasket „E“ (Certificates)	EPDM (FDA USP Cl. VI BSE/TSE-free EU-1935-2004)
Documentation „N“	„N“ Standard Documentation

Content of the “N” Standard Documentation

- Manual – English | German
- Drawing
- Certificate incl. declaration of conformity for the manufacture and pressure testing of pressure equipment according to the pressure equipment directive 2014|68|EU
- Certificate of Marking Control and Traceability
- Material Certificates
- Certificates for Gaskets USP Class VI | FDA

Housing Overview

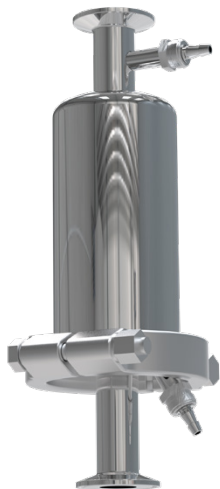


7M19LEN00001

Housing type Liquid Housing T-Type
Cartridge adapter 15 Mini
Height 5" (BH9)

Nozzle description:

Inlet TC 50,5 mm - 3/4" (19,05 mm × 1,65 mm)
Outlet TC 50,5 mm - 3/4" (19,05 mm × 1,65 mm)
Venting Pharma valve
Inlet-outlet distance 172 mm



7M19LEN00040

Housing type Liquid Housing I-Type
Cartridge adapter 15 Mini
Height 5" (BH9)

Nozzle description :

Inlet TC 50,5 mm - 1" (25,4 mm × 1,65 mm)
Outlet TC 50,5 mm - 1" (25,4 mm × 1,65 mm)
Venting Pharma valve
Drain Pharma valve
Inlet-outlet distance 289 mm



7M19LEN00162

Housing type Gas Housing T-Type
Cartridge adapter 15 Mini
Height 5" (BH9)

Nozzle description :

Inlet TC 50,5 mm - 3/4" (19,05 mm × 1,65 mm)
Outlet TC 50,5 mm - 3/4" (19,05 mm × 1,65 mm)
Venting Pharma valve
Drain Pharma valve
Inlet-outlet distance 164 mm



7S11LEN00147

Housing type Liquid Housing T-Type
 Cartridge adapter 25 (code 7)
 Height 10"

Nozzle description :

Inlet TC 50,5 mm – ISO DN 25 (33,7 mm × 2,0 mm)
 Outlet TC 50,5 mm – ISO DN 25 (33,7 mm × 2,0 mm)
 Venting Pharma valve
 Drain Pharma valve
 Inlet-outlet distance 243 mm



7S11LEN00091 (10")
7S12LEN00091 (20")

Housing type Liquid Housing T-Type
 Cartridge adapter 25 (code 7)
 Height 10" and 20"

Nozzle description :

Inlet TC 50,5 mm – OD 1" (25,4 mm × 1,65 mm)
 Outlet TC 50,5 mm – OD 1" (25,4 mm × 1,65 mm)
 Top nozzle TC 50,5 mm – OD 1,5" (38,1 mm × 1,65 mm)
 Venting Pharma valve
 Inlet-outlet distance 217 mm



7S11LEN00839

Housing type Liquid Housing I-Type
 Cartridge adapter 25 (code 7)
 Height 10"

Nozzle description :

Inlet TC 50,5 mm – OD 1,5" (38,1 mm × 1,65 mm)
 Outlet TC 50,5 mm – OD 1,5" (38,1 mm × 1,65 mm)
 Venting Pharma valve
 Drain Pharma valve
 Inlet-outlet distance 442 mm



7S11LEN00138 (10")

7S12LEN00138 (20")

Housing type Gas Housing T-Type
Cartridge adapter 25 (code 7)
Height 10" and 20"

Nozzle description :

Inlet TC 50,5 mm – OD 1,5" (38,1 mm × 1,65 mm)
Outlet TC 50,5 mm – OD 1,5" (38,1 mm × 1,65 mm)
Top nozzle TC 50,5 mm – OD 1,5" (38,1 mm × 1,65 mm)
Venting Pharma valve
Drain Pharma valve
Inlet-outlet distance 252 mm



7S11LEN00414

Housing type Vent Housing I-Type (pressureless)
Cartridge adapter 25 (code 7)
Height 10"

Nozzle description :


Inlet | Outlet TC 50,5 mm – OD 1,5" (38,1 mm × 1,65 mm)
Total height 395 mm
Venting To the atmosphere

Germany

Sartorius Stedim Biotech GmbH
August-Spindler-Straße 11
37079 Göttingen
Phone +49 551 308 0

USA

Sartorius Stedim North America Inc.
565 Johnson Avenue
Bohemia, NY 11716
Toll-Free +1 800 368 7178

 For further contacts, visit
www.sartorius.com