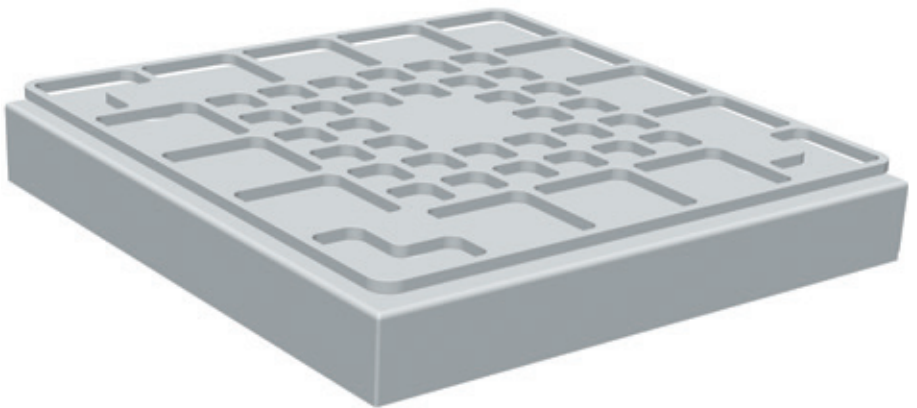


Installation Instructions | Installationsanleitung

YWP07MS

Grid Weighing Pan | Gitter-Waagschale



EN

1 Other Applicable Documents

In addition to this manual, please observe the operating instructions for the Sartorius Cubis® laboratory balance.

2 Intended Use

The grid weighing pan is designed to have the sample to be weighed placed on it, e.g. infusion bag or filter. The grid weighing pan can be installed on Cubis® balances with a readability of 0.01 g or 0.1 g and a weighing capacity of up to 14.2 kg. The grid weighing pan replaces the standard weighing pan.

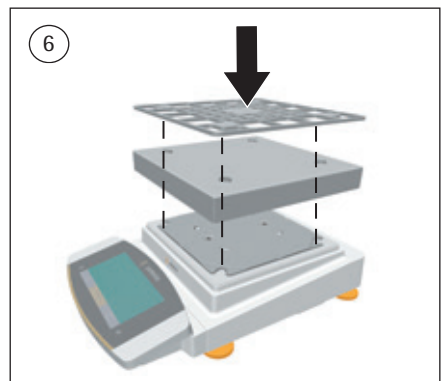
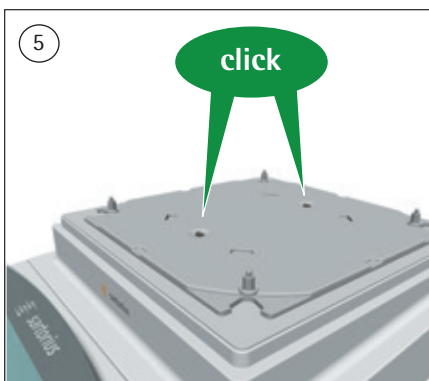
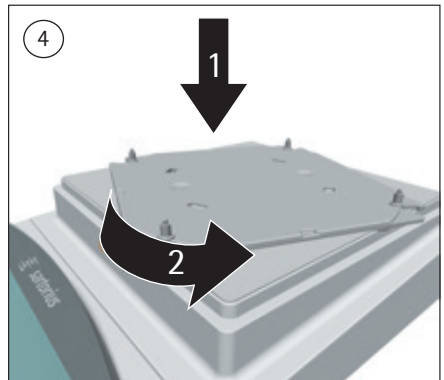
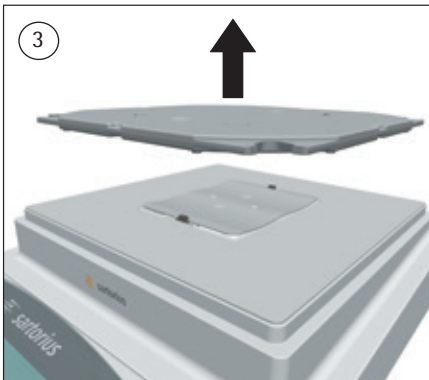
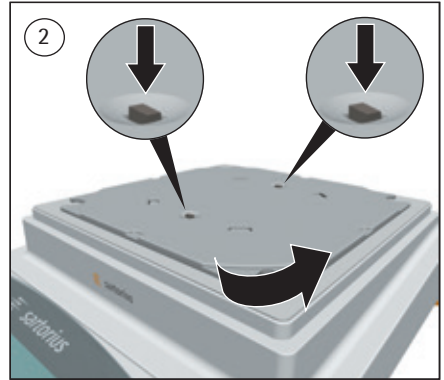
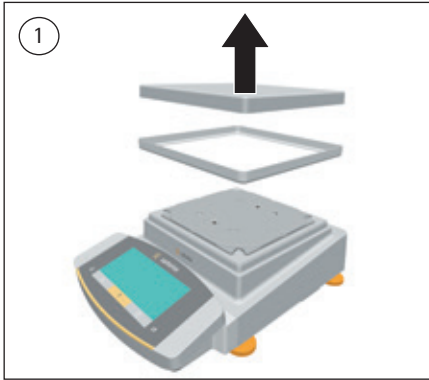
DE

1 Mitgeltende Dokumente

Ergänzend zu dieser Anleitung die Betriebsanleitung der Sartorius Cubis®-Laborwaage beachten.

2 Bestimmungsgemäße Verwendung

Die Gitter-Waagschale dient zur Aufnahme des Wägeguts, z. B. Infusionsbeutel oder Filter. Die Gitter-Waagschale kann auf Cubis®-Waagen mit einer Ablesbarkeit von 0,01 g oder 0,1 g und einem Wägebereich bis maximal 14,2 kg installiert werden. Die Gitter-Waagschale ersetzt die Standard-Waagschale.



Sartorius Lab Instruments GmbH & Co. KG
Otto-Brenner-Strasse 20
37079 Goettingen, Germany

Phone: +49.551.308.0
www.sartorius.com

The information and figures contained in these instructions correspond to the version date specified below.

Sartorius reserves the right to make changes to the technology, features, specifications and design of the equipment without notice. Masculine or feminine forms are used to facilitate legibility in these instructions and always simultaneously denote the other gender as well.

Copyright notice:

This instruction manual, including all of its components, is protected by copyright. Any use beyond the limits of the copyright law is not permitted without our approval. This applies in particular to reprinting, translation and editing irrespective of the type of media used.

© Sartorius Germany

Last updated:
09 | 2017